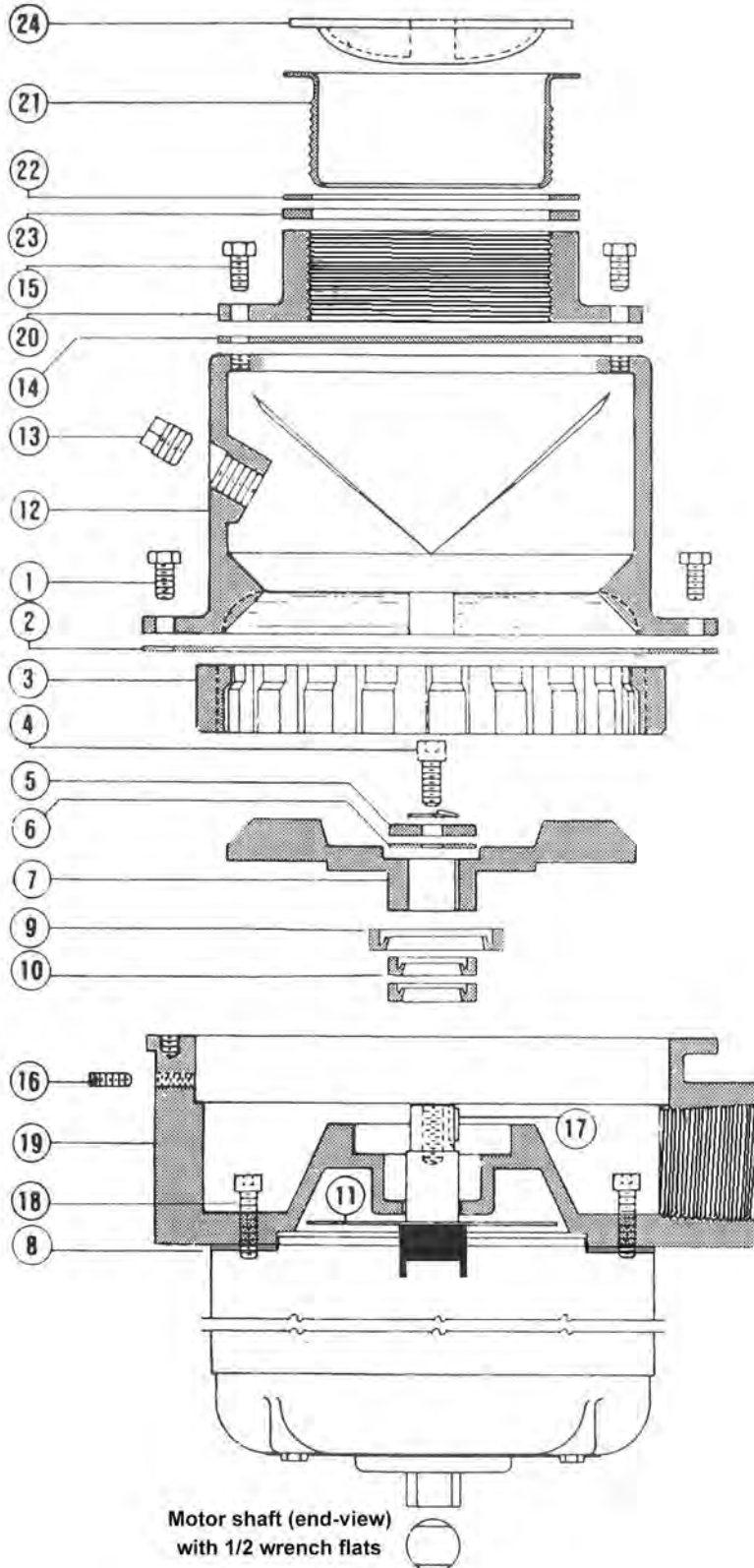




**SERIES D 6" ROTOR**  
**PARTS BREAKDOWN**



<u>Item No.</u>	<u>Part No.</u>
-----------------	-----------------

Numbers in parenthesis are total required quantities

1	SCREWS/Waste Chamber (6)	A-3300
2	GASKET/Sizing Ring	A-906
3	SIZING RING	A-902
4	SCREW/Center Plate	A-3400
5	CENTER PLATE	A-908
6	GASKET/Center Plate	A-907
7	ROTOR TURNTABLE	A-901NS
8	GASKET: MOTOR/BASE	07-HA-5
9	LIP SEAL	A-920
10	LIP SEALS/Motor Shaft (2)	A-911A
11	SLINGER/Motor Shaft	A-912
12	WASTE CHAMBER	A-903
13	PLUG	10-5-27
14	SPLASHGUARD/GASKET	07-H-18
15	SCREWS/Head (4)	A-3301
16	SET-SCREWS/Sizing Ring(2)	A-3309
17	KEY	A-3310
18	SCREWS/Motor (4)	A-2202A
19	BOWL	A-900
20	HEAD-Casting	A-904
21	CUP-Stainless	27-H-15
22	GASKET-Fiber	07-H-20
23	GASKET-Vinyl	07-H-19
24	STOPPER	06-H-8

**MOTOR OPTIONS**

- 1 HP / 1 PH	02-D-111
- 1 HP / 3 PH	02-D-013
- 2 HP / 1 PH	02-D-021
- 2 HP / 3 PH	02-D-023

LOWER MOTOR BEARING	M-6205
UPPER MOTOR BEARING	M-6305

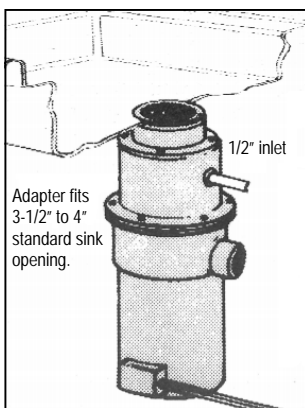
SEAL AND GASKET KIT	D-SGK-NS
- INCLUDES ITEMS	
2, 6, 8, 9, 10, GREASE	

COMPLETE RENEWAL KIT	D-CRK-NS
- INCLUDES ITEMS	
1, 2, 3, 4, 5, 6, 7, 8, 9, 10,	
11, GREASE	

# SERIES "D" PROCEDURE FOR COMPLETE PARTS REPLACEMENT

DISASSEMBLY		REASSEMBLY	
DISASSEMBLE BY FOLLOWING THE STEPS BELOW IN ORDER		REASSEMBLE DISPOSER COMPONENTS IN FOLLOWING ORDER	
STEP	ITEM	STEP	ITEM
<b>A</b>	<b>SCREWS/Waste Chamber.</b> Remove 6 Screws, separating Bowl(19) from Chamber(12). Regardless of style of Head used, there is no need to remove Chamber when servicing unit	<b>A</b>	<b>LIP-SEALS/Shaft (Two).</b> Pack Seal cavities with waterproof grease. Press, open sides up into greased counterbore.
<b>B</b>	<b>SET-SCREWS/Sizing Ring (two).</b> Remove to free sizing ring.	<b>B</b>	<b>SLINGER/Motor Shaft.</b> Install replacement Slinger.
<b>C</b>	<b>SCREW/Center Plate—</b> with lock washer. Hold 1/2" flats on shaft extension beneath motor while removing Screw.	<b>C</b>	<b>MOTOR.</b> Before re-installing Motor, thoroughly clean the counterbore to accept Motor-Flange. Press greased shaft, with rotating motion, through the installed Lip-Seals. With Motor positioned as before, replace 4 Motor <b>SCREWS</b>
<b>D</b>	<b>CENTER PLATE.</b> Remove Plate and <b>GASKET/Center Plate.</b>	<b>D</b>	<b>LIP-SEAL.</b> Pack Seal cavity with waterproof grease. Press, open sides up, into greased counterbore.
<b>E</b>	Replace <b>SCREW/Center Plate (4)</b> in shaft-hole to protect threads. Hold shaft extension flats to replace screw.	<b>E</b>	<b>ROTOR TURNTABLE—</b> Place on shaft, aligning keyway slots in shaft & Rotor. Adjust Rotor so that the top of Rotor remains slightly above end of shaft. Insert <b>KEY</b> .
<b>F</b>	Insert two 3/8-16 screws in tapped holes in surface of Rotor turntable (7), leaving head-space for wheel puller.	<b>F</b>	<b>GASKET/Center Plate.</b> Place Gasket over center of shaft.
<b>G</b>	Tap gently with hammer around top surface of Ring (3) to loosen. Center a wheel puller on Screw (4). Then, using screws Inserted in Rotor Turntable, remove together: <b>GASKET/Sizing Ring</b> <b>SIZING RING</b> <b>ROTOR TURNTABLE</b>	<b>G</b>	<b>CENTER PLATE.</b> Position the Plate on top of Gasket.
<b>H</b>	<b>KEY—</b> Remove from keyway	<b>H</b>	<b>SCREW/Center Plate—</b> with lock washer. Hold 1/2" flats on shaft extension when tightening screw in shaft. Center Plate will press Rotor down into its correct position. Shaft-top will be flush with recess in Rotor Turntable.
<b>I</b>	<b>SCREWS/Motor—</b> Remove to separate motor from Bowl(19).	<b>I</b>	<b>SIZING RING.</b> Press Ring, evenly, in Bowl(19) counterbore. Top of Ring will be positioned flush with top of Bowl. Replace two <b>SET SCREWS</b> in Bowl. Turn Ring so screws are spaced between raised bosses. Ring is secured with light contact of screws on wall. Do not tighten screws.
<b>J</b>	<b>LIP-SEAL—</b> Remove from counterbore. Clean the counterbore.	<b>J</b>	<b>GASKET/Sizing Ring</b>
<b>K</b>	<b>LIP-SEALS/Shaft (two).</b> Remove from counterbore. Clean the counterbore thoroughly for acceptance of new Lip-Seals.	<b>K</b>	<b>SCREWS/Chamber.</b> Replace 6 screws to rejoin the chamber with the Bowl & Motor. Reassembly is then complete.
At this disassembly-point, clean, polish, and inspect shaft in seal area.			

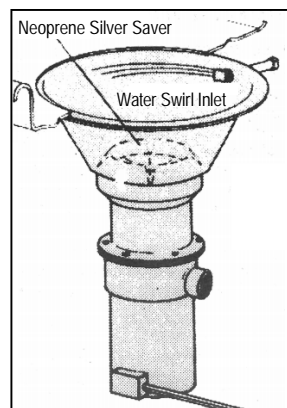
## TWO SERIES "D" DISPOSER HEAD STYLES ARE SHOWN BELOW



Adapter fits 3-1/2" to 4" standard sink opening.

**MODEL SK  
SINK ADAPTER HEAD**

Item No.	Part No.
20 HEAD-Casting	A-904
21 CUP-Stainless	27-H-15
22 GASKET-Fiber	07-H-20
23 GASKET-Vinyl	07-H-19
24 STOPPER	06-H-8



**MODEL BC  
BOWL/CONE HEAD**

Item	Part No.
12" BOWL/CONE	H-403
18" BOWL/CONE	H-401
SWIRL INLET 1/2"	10-5-701
8-1/4" SILVER SAVER	H-391

### Master Disposers

SOMAT COMPANY  
165 Independence Court, Lancaster, PA 17601  
717-397-5100 — FAX #717-299-4131  
800-237-6628 ext. 173 — www.masterdisposers.com

**TW Food Equipment Group**