



APPLICATION: Salad prep areas and areas of small volume and light waste.

SPECIFICATIONS: Disposer to be a Master Disposer Model D(HP) - (Chamber - (Style) - (Mounting - (Assm.) - (Control & Voltage)
6" Diameter Rotor/Turntable with 2 integral impact breakers constructed of hardened ductile steel alloy for long life use. Matching Sizing Ring with 20 grind teeth constructed of hardened ductile steel alloy 4 3/4" throat opening. Low body chamber with force feed directional deflectors. Bolt on grind chamber for ease of removing disposer during servicing. Cast in discharge flange. Water inlet in waste chamber wall. Bolt on "Continuous Duty" motor for easy removal. Exclusive shaft extension with 1/2" wrench flats to externally de-jam foreign matter without special tools. Heavy cast alloy construction providing an extra long life disposer

MOUNTING ASSEMBLIES:

"SK" 4 3/4" Sink Adaptor

INCLUDES: Vacuum Breaker, Flow Control, Stopper, and Solenoid Valve

"SK" 8 1/4" Sink Adaptor

INCLUDES: Vacuum Breaker, Flow Control, Silver Saver, and Solenoid Valve

"BC" 12" or 18" Bowl Cone

INCLUDES: Vacuum Breaker, Flow Control, Silver Saver, Water Inlet, and Solenoid Valve

"L" LOW CHAMBER
(STANDARD)



ADAPTORS: Available for replacing any make disposer

CONTROL GROUP:



MS SERIES
Manual On/Off Switch
(Non-Reversing)



MC SERIES
Magnetic Starter
(Non-Reversing)



RMS SERIES
Drum Switch
(Manual-Reversing)

AUTOMATIC REVERSING PREFABRICATED CONTROL CENTERS:



RAC1
Auto Rev
Timed Water Afterrun
Timed Motor Afterrun
Auto Off Feature



RAC2
Auto Rev
Timed Water Afterrun
Timed Motor Afterrun
Auto Off Feature
Lighted Push Buttons
Line Disconnect Handle

EXAMPLE OF DATA SEQUENCE FOR SPECIFICATION AND ORDERING

D 1 - L - SK - RAC2 230/60/3

Series
Horsepower
Chamber
L = Low Body STD.

Control Group as specified (Must advise Electrical Characteristics)
Mounting Assembly Group
BC = Bowl Cone
SK = Sink Adaptor

SERIES "D" INSTALLATION DATA AND DIMENSIONS

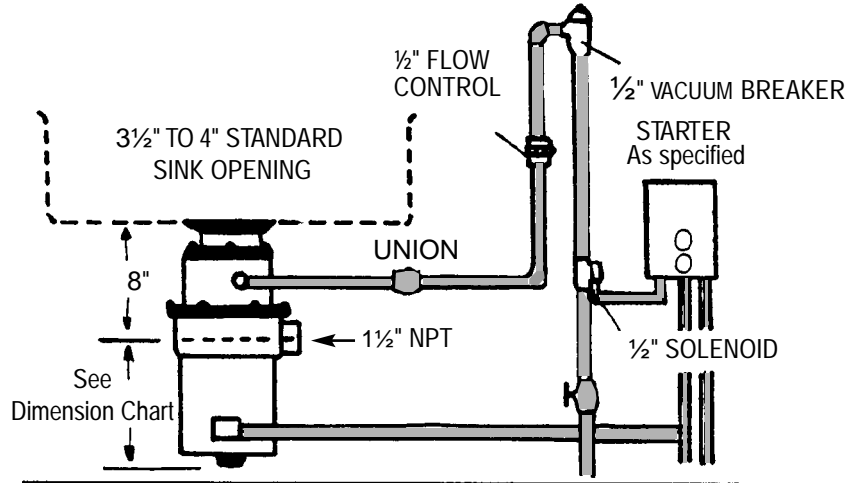
MOTOR DATA

HP	PH	Voltage	Amps.
1	1	115/230	13.2/6.6
1	3	208-230/460	4.2/2.1
2	1	115/230	19.0/9.5
2	3	208-230/460	6.0/3.0

Continuous Duty-Dual Voltage Dual Direction and overload protection in motor 1750 RPM-60 CY Motors. Full service factor-in accordance with NEMA & NEC electrical codes. Bearings permanently lubricated.

TYPICAL INSTALLATION

4³/₄" SINK ADAPTOR 'SK'



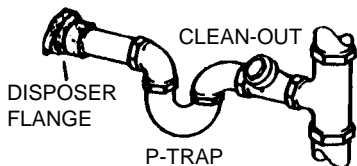
SHADED SUPPLIED BY OTHERS

DISPOSER PLUMBING

INLET: 1/2" cold water supply at 20 lbs. minimum flow pressure.
OUTLET: 1 1/2" female std. thread pipe coupling. Connect directly to drain, not thru grease trap.
DRAIN: Min. slope 1/4" per foot.
 Use recessed thread fitting w/pipe ends reamed/burr-free. Use short horizontal line w/ elbows and tees at minimum, using only long-sweep type. Connected to 2" branch line running into stack.
IMPORTANT: Rod and clean drain before using disposer, even in a new installation.

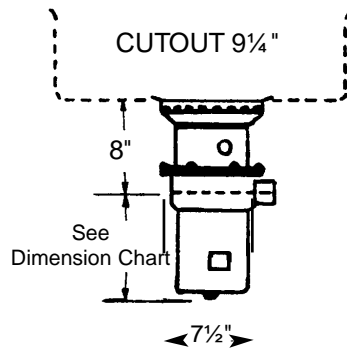
SUGGESTED DRAINLINE CONNECTION

1 1/2" WASTE LINE

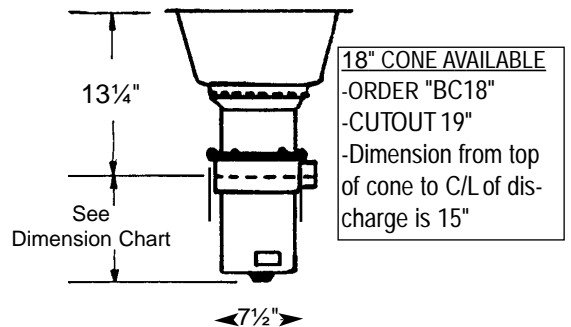


DIMENSIONS

8 1/4" SINK ADAPTOR 'SK'



12" BOWL / CONE 'BC'



18" CONE AVAILABLE
 -ORDER "BC18"
 -CUTOUT 19"
 -Dimension from top of cone to C/L of discharge is 15"

DIMENSIONS

3 PHASE	
H.P.	Heights
1	9.75"
2	10.5"
1 PHASE	
H.P.	Height
1	9.75"
2	12.0"
BOTTOM OF SHAFT EXTENSION TO CENTERLINE OF DISCHARGE	



NOTE:
 ALL ELECTRICAL AND PLUMBING CONNECTIONS SHOULD BE MADE ACCORDING TO LOCAL AND AREA CODES.

Master Disposers

SOMAT COMPANY
 165 Independence Court, Lancaster, PA 17601
 717-397-5100 — FAX #717-299-4131
 800-237-6628 ext. 173 — www.masterdisposers.com

TW Food Equipment Group